

www.camra.org.uk/sheffield

BEER MATTERS

Issue 417

March 2012

The **FREE** magazine of the
Sheffield & District Branch of CAMRA
(The Campaign for Real Ale).

New Real Ale Scene *New CAMRA Sub-Branch*



Dronfield and villages has always had a number of nice pubs serving well kept ales, however the scene has grown and upped its game with some of the new pubs and bars that have joined the traditional favourites. If you are a CAMRA member and live in the Dronfield area, do come along to our inaugural meeting at the **Green Dragon at 7:30pm on Thursday 15th March** to set up the new sub branch. A beer tasting social will follow at the Dronfield Arms.



INSIDE BEER MATTERS THIS ISSUE...

Beer Festivals - what's coming up in the next few months...

...including further details of the Three Valley's Festival!

Plus all of your local pub and brewery news...



An Abbeydale Brewery Pub
www.risingsunsheffield.co.uk

471 Fulwood Road
 Sheffield S10 3QA
 0114 230 3855

Open 12 to 11 daily
 Food available lunchtimes
 and evenings

New winter menu

weekdays and Saturday
 Sunday Carvery 12-3pm

13 handpulls, a fantastic line-up of Abbeydale and guest beers.

13 real ales - including 7 guests from micros, 6 Abbeydales including seasonals

Good selection of Belgian bottles, draught lagers,

Belgian fruit beers and real cider/perry

Monday Night music -see website for details

Quiz on Wednesday and Sunday start 9.30pm prompt

Carvery every Sunday 12-3 - booking recommended

Getting there:

On the 120

bus route from city

Bus every 10 mins



Unit 8, Aizlewood Road
 Sheffield S8 0YX
 Telephone 0114 - 281 2712

**Abbeydale
 Brewery**



www.abbeydalebrewery.co.uk

For all the latest news, follow us on Facebook
 and Your Round

Our Local Heroes



Moonshine 4.3%

Sheffield's most popular
 beer for the fourth
 year running*

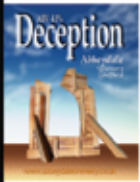
*Most frequently encountered beer in
 the Sheffield Beer Capital survey
 2008, 2009, 2010, 2011



Absolution 5.3%

Champion beer of
 Yorkshire 2011*

*Awarded by Rotherham CAMRA



Deception 4.1%

Sheffield's 2010
 Champion beer*

*Awarded by Sheffield & District
 CAMRA



Specials for March

The Angel beers, both abv
 4.7%, last brewed 2007

Archangel, pale hoppy and
 well balanced. Caramel
 and fruit flavours.

Dark Angel, same hops but
 a dark beer with toasty
 and rich raisin and sultana
 fruit flavours.

Dr Morton's Sauce of the
 Nile 4.1%. Golden, hoppy
 and well-balanced beer.

See the website or facebook for more specials



Local Brewery News...

Kelham Island Brewery – www.kelhambrewery.co.uk

Another interesting month at Kelham Island with a Wedding, a fact finding tour of Belgian breweries, and the most difficult problem of all, what to buy for Valentine's Day. Our 'Racking King', Matt, tied the knot with Helen at Sheffield Town Hall and we wish them all the best. Head Brewer Iain had a useful and interesting visit to Europe in search of new ideas and we all bought flowers from Tesco (they were reduced by mid afternoon).

As February draws to a close hopefully everyone was lucky enough to catch a taste of **Bete Noir** (ABV 5.5%) and **Bohemian Rhapsody** (ABV 4.7%). Bete Noir revisits annually and was particularly well received this year having received a small but effective tweak from wily Master Brewer Nigel. 'Turnbull apprentices', Carl and Craig, continue to look amazed.

March sees the return of **45rpm** (ABV 4.5%) with its distinctive record label pump clip, for those who remember records, it's a rock and roller of Pale Ale with a massive fruity citrus aroma, succulent pale malts supporting the zingy hops for a festival of zesty flavour. Brand new for March is **Big Black Blue Sound** (ABV 5.3%) a classic American IPA with a twist. A quartet of pungent hop varieties give a wave of fruit and floral aromas which complement a malt grist taken to the dark side with black malts creating a stunning black IPA.

A collaboration between Kelham owner Dave Wickett & Sharps Brewery which produced a very special **DW Ale** has raised £6314 for charity and the big cheque was handed over earlier this month. The 9.5% barley wine was produced in 750cl champagne bottles and as we go to press there are just 4 bottles remaining in the Kelham Island Brewery shop.



More Brewery News overleaf...

KELHAM ISLAND TAVERN : "ALE OASIS" By Roger Protz SHEFFIELD PUB OF THE YEAR 2011

**AT LEAST 12 REAL ALES, ALWAYS INCLUDING A MILD, STOUT AND PORTER
AT SENSIBLE PRICES (FROM £2.00 A PINT) .**

TRADITIONAL CIDER AND PERRIES.

CASK MARQUE ACCREDITATION - 100% PASS.

QUIZ EVERY MONDAY FROM 9.15. WITH PRIZES AND BUFFET.

**Come along and join us on Monday 31st October
for a special HALLOWEEN food evening with special evening menu
including Smoggy's legendary curried pumpkin and turnip soup.**

Served from 5.00 till 8.30 followed by our usual BIG JIM Quiz at 9.15pm

**@ 62 Russell Street SHEFFIELD S3 8RW Tel 0114 2722482
kelhamislandtavern.co.uk**

Continued from previous page

Steel City Brewing - www.steelcitybrewing.co.uk

Steel City's latest beer is **Queen Anne's Revenge** (named after Blackbeard the Pirate's ship), a very rare example of a West Indian Stout (5.7%, 61IBU, 70.6EBC). As well as chocolate malt and roasted barley, this brew included a whole sack of dark Muscovado sugar, which is particularly high in molasses, to give a treacly, rum-like flavour along with blackberry fruitiness from the Bramling Cross hops. A variant, **Shakti Clag**, contains a pound of freshly crushed coffee, and has been produced as a special for Doncaster Beer Festival (12-14 April), and will also appear more locally in the Shakespeare. Another variant features additional dry-hopping with Sorachi Ace, and is called **A Slight Case of Overhopping 10**.

At long last, **The Grim North Black IPA** (7.1%, 114IBU) - brewed by Steel City in collaboration with Cervesa Marina at Fortiverd in Catalunya - has arrived on these shores, and is available for a limited time only in the Sheffield Tap, along with **Marina's own Pale Ale** (5.5%). Grim North was brewed with Pale, Cara, Carared and Carafa Spezial malts, and hops include Super Alpha for bittering and the 'awesome' Galaxy for flavour.

Steel City have once again been invited to supply the Mare di Birra (Sea of Beer) cruise from Rome to Barcelona and return, from 16-19 June - more details at www.unmaredibirra.com but basically 8 on-board bars, each set up by one of Europe's top pubs (including Ma Che Siete Venuti A Fa in Rome, T'Arendsnest in Amsterdam, Moeder Lambic in Brussel...) and each featuring 7-8 craft beers at a time - all included in the price! Steel City will be sending **Queen Anne's Revenge**,

Emperor (Imperial West Indian Stout), a hopfenweisse and a pale hoppy beer or two...



THE DEVONSHIRE CAT DEVONSHIRE QUARTER

49 WELLINGTON STREET SI 4HG - Tel: 0114 2796700
www.devonshirecat.co.uk

OVER 100 BEERS FROM AROUND THE WORLD

CHOOSE A REAL ALE FROM OUR SELECTION OF 12 DIFFERENT REAL ALES AT ALL TIMES!

EVER TRIED A TRAPPIST BEER MADE BY MONKS?

THERE ARE 7 DIFFERENT TRAPPIST BREWERIES; WE HAVE BEERS FROM 6 OF THEM!

MAYBE SOMETHING A BIT SWEETER?

WE HAVE FRUIT BEERS ON DRAUGHT AND IN BOTTLES

WE OFFER FRESHLY PREPARED FOOD FOR ALL!

WHETHER YOU WANT A LIGHT SNACK, A LIGHT OR HEARTY MEAL, YOU WON'T BE DISAPPOINTED!
AND OF COURSE, YOU COULD TRY ONE OF OUR RENOWNED HOMEMADE BEEF BURGERS.

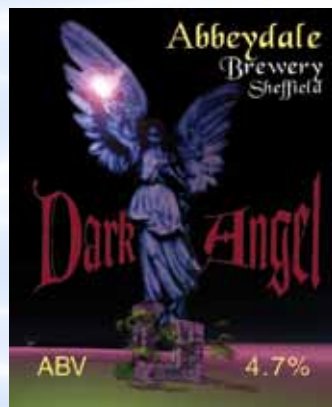
YOU MAY HAVE HAD FOOD MATCHED WITH WINE?

HERE AT THE DEVONSHIRE CAT WE TAKE ADVANTAGE OF OUR DIVERSE SELECTION OF
BEER STYLES & FLAVOURS TO COMPLIMENT OUR FOOD!

**ENJOY EXCELLENT BEER & FOOD IN OUR RELAXED AND FRIENDLY ATMOSPHERE
HERE AT THE DEVONSHIRE CAT!**

Abbeydale Brewery - www.abbeydalebrewery.co.uk

March will see the launch of the brewery's new website (at the same web address) please check it out. March also sees the return of the "Angel" beers, **Archangel** and **Dark Angel**. These were last brewed in 2007. Both are 4.7% and made with the same hops - majoring on East Kent Goldings and Liberty, but with different malts. **Archangel** is made with 100% low colour malts and so is a pale beer, really allowing the fruitiness of the hops to come through. **Dark Angel** is made with some roast barley in the mix giving a dark beer with lots of roast flavours and deepening the fruit flavours to sultanas and raisins. It makes for an interesting taste experience to try the two side by side. The Dr Morton's beer is **Sauce of the Nile** at 4.1% but at the time of writing the recipe wasn't decided, so it will be pale and hoppy but the hops are not yet confirmed. Keep an eye on the new website for more information.



Acorn Brewery - www.acorn-brewery.co.uk

This month we're brewing in addition to our standard range: **Stingo** 4.2% - a light golden ale brewed with a hint of locally sourced honey & **Delta IPA** 5% - 14th in a second series of IPA's. Rich golden coloured ale, slightly spicy with a hint of citrus.

Welbeck Abbey Brewery - www.welbeckabbeybrewery.blogspot.com

There will be two dark but very different Welbeck beers coming to you in March: **Dark Horse** 4.8% - a special Dark Ale brewed with hops from 3 continents, to give a complex citrus aroma that mingles with the burnt roast flavour of the dark malts and adds a hint of spiciness. The late addition of New Zealand hops gives an extra fruity zing. **Donovan** 4.1% - English fireside in a perfect pint. A rich, warming, hearty stout with smooth coffee and smoke flavours. This is brewed with a bold mix of black malts and despite the low strength, will be a seriously stonkin' stout.

More Brewery News overleaf...



Rutland Arms

Brown Street

Have a double whisky
for only £1 more
across our whole range!

Offer now extended
through until Easter!

Open: 12-11 Sun-Wed
12-12 Thu-Sat
Food: 12-9 Mon-Sat
12-6 Sun

rutlandarms@hotmail.co.uk
(0114) 272 9003
www.rutlandarmspeople.co.uk

Continued from previous page

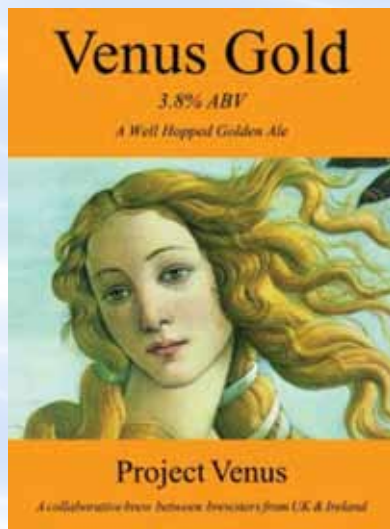
After venturing more in to the bottled beer market, we're pleased to say it's going really well. Several shops are now stocking the bottles, including Centre Parcs and Hops in a Bottle (Mansfield).

Claire, our head brewer, has recently got involved with Project Venus which aims to highlight women in brewing. 14 brewsters got together in Prospect Brewery (Standish, near Wigan) and brewed **Venus Gold**. This 3.8% super hopped pale ale was fantastic, and not for the faint hearted!! Each Brewster had a cask to take back to their area, and Claire sent ours to the Mallard at Worksop. We had a one off huge night on this beer and were pleased to say it was thoroughly enjoyed by everyone (some a little more than others!).

The Mallard in Worksop has quickly become a home for the Welbeck beers and we are installing a handpull exclusively for our ales. If you're in the area, pop in and try some, and let us know what you think.

Hodsock Priory has a snowdrop festival which runs throughout February, and this year we have brewed **The Drop** especially for them. It's a 3.6% blonde beer which has been dry hopped with Cascade to give it a really refreshing, crisp citrus note to it.

We'd just like to congratulate some of our customers who have won CAMRA pub of the season/year, and recommend them as well worth a visit! Mark and Lynne at the Haxey gate in Misterton; Wayne, Mel, and Carol at The Mallard in Worksop; and Ralph at the Masons Arms in Sutton in Ashfield.



The Angler's Rest

Graham & Beryl Yates.

Millers Dale, Buxton
Derbyshire SK17 8SN
Tel: 01298 871323
www.theanglersrest.co.uk

Blue Bee Brewery - www.bluebeebrewery.co.uk

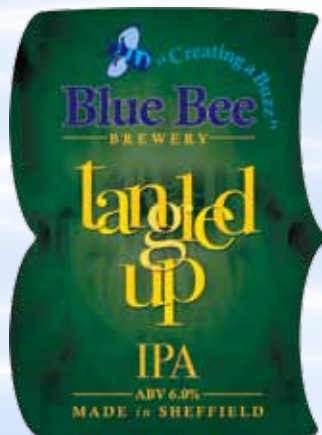
The guys were buzzing after scooping Champion Beer of the Festival at Chesterfield last month with the sublime **Rugbee Rugbee**. Excellent news.

Elsewhere, Richard recently released a small number of casks of **Tangled Up IPA** that had been aged at the brewery since October: one each to the Rutland Arms on Brown Street, the Beehive on West Street and the Three Cranes on Queen Street. The verdict? Somewhere between 'awesome' and 'spectacular'.

Spire Brewery - www.spirebrewery.co.uk

Latest estimates suggest that Spire Brewery should be up and brewing again at their new premises (still in Staveley) before then end of February. Final fitting of new pipe-work should be completed by then, leaving time to test that everything is working and to sort out any minor teething problems!

Look out for their new brew, **Deepdale Ale** - a pale IPA at 4.8%, in a few weeks time as their first special from the new brewery!



All your local pub news...

We presented our February Pub of the Month award to the **Old Crown at Handsworth**, a well-deserved win. The presentation night was most enjoyable with good ale and a valentines buffet including homemade curry, congratulations to all Old Crown and a thanks for the hospitality.



A couple of corrections to start this month's news, first of all the **Coach & Horses in Dronfield** is still owned by Sheffield Football Club, however Thornbridge have taken over the day to day running of the pub. **The Victoria, also in Dronfield**, now has the new owners in and two real ales available and the pub is officially a free house. The estate agents sign remained in place for a period after the new management moved in as a result of the way legal paperwork had to be done.

We reported last month that **Bloo88** had opened on

West Street, like BRB before it, pizzas and cocktails are available, however in its new guise a real ale is available in the form of Kelham Island Easy Rider.

Another new outlet for real ale in the **City Centre** is **Cavells Café Bar on High Street**, where handpumps were installed in January. At the time of writing Timothy Taylors Landlord and Marstons Pedigree were on the bar with Wells Bombardier Bitter due on next. It is thought that this is the first time in 20 years a bar on this site has offered traditional beer.

The George & Dragon in Holmesfield has installed a fifth handpump, increasing their range of real ales.

The Three Merry Lads at Lodge Moor has been refurbished and is under new management.

The Royal Standard in Sheffield City Centre is to be re-branded with a 'Tune Inn' theme and major on the musical entertainment. It is also planned to install a third handpump to increase the beer choice.

The Jamie Bosworth gourmet nights at the **Castle Inn, Bradway**, have proved very popular and the pub's dining room may be going that way full time.

The Nottingham House in Broomhill closed down yet again, we can report this is just a temporary three week closure and should be back in business very soon.

The New Inn at Gladless is being refurbished and it is anticipated a range of three real ales will be available.

More Pub news overleaf...

Continued from previous page.

Now, Beer Matters in no way wishes to go down a similar route to Heat magazine, but the landlord of the **Anglers Rest in Millers Dale** reports that he can now count Suggs from Madness amongst his customers, Suggs was doing a show in Buxton and popped in the Anglers for refreshment!

The Rutland Arms in Sheffield City Centre now has lined oversized pint glasses which means you should always get a full pint, even if you have a traditional northern head on your beer! The Rutland has also been seen briefly on TV after the Northern Lights Spoken Word event held there monthly, appeared in a trailer for 'Come Dine With Me'.

The first **Old No 7** beer festival was a tremendous success. We got off to a great start with a beer tasting with Roger Protz on the Wednesday evening. Roger then officially opened the event on the Thursday lunchtime. We had a steady flow of people throughout the 4 days sampling over 20 different cask ales. There was a cider tasting session on the Friday night delivered by the people at the Real Cider Co. The Saturday afternoon session was particularly excellent as quality real ale drinking was accompanied by quality music from some members of the Barnsley Folk club.

The Three Cranes in Sheffield City Centre now employs a chef and at the time of writing the kitchen refurbishment was nearly complete, hopefully by the time this issue is out food should be available. Sheffield CAMRA recently held a branch meeting in the pub and the chef took the opportunity to knock up a few homemade snacks for us ahead of the menu launch. Thanks to all at the Three Cranes for hosting us and I can report the food was good!

The White Lion at Heeley has undergone a full refurbishment that has seen the pub decorated inside and out with new carpeting and furnishings, the pool table has been removed to accommodate more seating and the range of cask ales has been increased. A whisky menu is now available with an extensive range to accommodate all tastes.

A launch party is planned for Friday the 16th March with a live band and more information is available on their website www.whitelionsheffield.co.uk

The White Rose in Handsworth is closed and fenced off.

The Dronfield Arms in Dronfield has been offering a cheap curry to regulars card holders

buying a drink on Monday nights and this is proving very popular. It is a different curry each week served with rice for £1.

They are also launching a monthly comedy night, hosted by Sheffield based compere and comedian, Anthony J Brown (The Stand Up Show and Phoenix Nights). The launch night is Wednesday March 21st, 8pm start and then on the 2nd Wednesday of each month. The audience will vote on the best act of the evening, who will receive £50! So, if you're the office wit or the wag in the snug and fancy yourself as a gagster contact Chris on 07834 950693. Tickets are just £3, or £2 in advance, available in the Dronfield Arms or call 07834 950693.

The Three Merry Lads is a short walk from the **Lodge Moor** bus terminus and began its life in 1810 as a farm building and was first licenced in 1833. Extensions have taken place over the years and it is now more a restaurant but with an area set out like a traditional pub with log fire. Barry Cruxall and Jane Thompson are now running The Three Merry Lads and it has just been redecorated throughout. Up to five real ales are available, they are Bradfield Blonde, Sharp's Doombar, Kelham Island Easy Rider, Tetley Bitter and Greene King Abbot Ale. Make yourself known as a CAMRA member and you will get a 10p a pint discount.

Pub of the Month

Our pub of the month awards are designed to highlight and support pubs and bars across Sheffield and District that consistently serve good quality real ale in a friendly and comfortable environment. These are the only real principle we apply, so anything from a community local to a trendy city bar can win if it meets CAMRA's basic ideals. If you are a CAMRA member why not pay a visit to some of the nominated pubs and vote whether you think they deserve to win or not.

To vote for a pub you must be a CAMRA member, and have visited the pub within the last 3 months. The book with the nomination forms to add vote to is available at all branch meetings, or alternatively send an e-mail with your name, membership number, name of pub and an indication of whether you are casting a positive or negative vote to potm@sheffieldcamra.org.uk

Current nominations:

Henry's, Sheffield City Centre
Red Deer, Sheffield City Centre
Old Horns, High Bradfield
The Stag, Sharrow
The York, Broomhill



THE BALL, CROOKES

171-173 CROOKES, SHEFFIELD S10 1UD
0114 266 1211

Newly refurbished, our popular pub is famed for its welcoming, safe and friendly environment.

Ten great cask conditioned ales, some brewed locally, a selection of fine world wines with great sport shown in HD & 3D

Traditional food is now being served with a modern twist from our new kitchen,
11am until 9pm daily at fantastic value for money.

Freshly ground Italian coffee is available to enjoy in comfort or takeaway.

GENERAL KNOWLEDGE QUIZ

(WITH CRACK THE SAFE)

EVERY WEDNESDAY FROM 9:30PM

CHILDREN WELCOME UNTIL 9PM



Gardeners Rest



THE HALLMARK OF A PERFECT PINT

Up to 12 Real Ales including beers from
The Sheffield Brewery Co. Ltd., Continental Beers on
draught and bottled, Art Exhibitions, Bookcrossing Shelf,
Traditional pub games including
Bar Billiards table.

Bar Billiards
FREE TABLE
EVERY MONDAY

MUSIC...MUSIC...MUSIC...MUSIC...

Wed 29th Feb	John Keane Session 8.30pm
Thurs 1st Mar	Bluegrass Group 8.30pm
Fri 2nd	M & J Blues 9pm
Sat 3rd	Jim O'Mahoney 9pm
Fri 9th	John keane & Friends 9pm
Sat 10th	tbc
Sun 11th	Sea Shanty Session 3pm
Wed 14th	Tracey's Session 8.30pm
Thurs 15th	Scandi Session 8.30pm
Fri 16th	Jackalope Tales 9pm
Sat 17th	PADDY'S NIGHT SESSION
Fri 23rd	tbc
Sat 24th	Steve Cosgrove with Jeremy Meek
Wed 28th	John Keane Session 8.30pm
Thurs 29th	Galaetic Session 8.30pm
Fri 30th	Billy Martin Jnr. 9pm

Quiz Night
Every Sunday
from 9pm
A general
knowledge
quiz (free)
followed by
the
'On the Spot'
Raffle quiz
with the
chance to win
up to £150
(tickets 50p)

FUTURE EVENTS in April and May...

- 'Feast Your Eyes' - A Special Exhibition of Art at the Gardeners Rest
- Gardeners Folk Weekend - music and dance 12th/13th May
- The Last Orders Beer Festival 17th - 20th May

Normal Opening Hours

Mon-Wed 3pm - 11pm, Thurs 12 - 11pm, Fri-Sat 12 - 12mn, Sun 12 - 11pm

Gardeners Rest, 105 Neepsend Lane, Sheffield, S3 8AT
0114 2724978 e-mail: gardenersrest@btinternet.com



@gardeners_rest

*Kev and Steph welcome customers
old and new to the*

NEW BARRACK TAVERN

601 Penistone Road, Sheffield. S6 2GA. Telephone: 0114 234 9148

E-mail: newbarracktavern@castlerockbrewery.co.uk

We are now on Facebook!



*Real ales:
Regulars & guests
including
Castle Rock beers*

*World imports:
Continental draught
& bottled beers.*

***Fresh food:** Lunchtimes & evenings, late-night
takeaway, pre-match menu, buffets ,private parties,
Sunday Carvery & home of the **ultimate burger!***

***Great savings:** with our "1-over-the-8" promotion.*

***Bar Billiards:** now available - only 50p a go!*

Sheffield in Bloom 2011: A Gold award and Overall Winners!

Funhouse Comedy Club

**1st Sunday
of each month!**

Follow us on



&





Beer Festivals roundup

At Beer Matters we know how much you all love beer festivals so here is a short guide to festivals in or near our area over the next month or so along with the latest news on the Three Valleys Festival this June.

We start with **Rotherham's Magna Beer & Cider festival** which runs from **29th February to 3rd March** with over 200 beers and ciders plus entertainment in a former steelworks. CAMRA members get discounted entry to this festival. To get there from Sheffield use bus 69 from Sheffield Interchange (operated by First in the daytime and Stagecoach in the evening) or the special festival shuttle bus BF1 from Meadowhall Interchange. Festival information at www.magnarealale.co.uk and bus information at www.travelsouthyorkshire.com

Over the same weekend is **Loughborough beer festival** at the Polish Club. This features around 70 real ales plus cider & perry. CAMRA members get free admission to this festival. A direct train service runs every hour from Sheffield to Loughborough, operated by East Midlands Trains. Festival information at www.loughboroughcamra.org.uk, train information at www.eastmidlandstrains.co.uk

The following weekend is **Leicester beer festival**, which takes place from **7th to 10th March**. This festival is well known for two things - the number of new and rare beers on the list and the curries. The beer list stretches to around 220 different beers, of which about a third are sourced from the local region. There are also about 30 ciders to choose from. On the food front there are a choice of authentic Indian curries as well as simple English favourites. The venue is the Charotar Patidar Samaj and CAMRA members enjoy free admission to this festival. A direct train service runs twice an hour from Sheffield to Leicester, operated by East Midlands Trains. Festival information at www.leicestercamra.org.uk, train information at www.eastmidlandstrains.co.uk

Burton on Trent beer festival takes place from the **15th to 17th March** at Burton Town Hall, a fantastic gothic building with the festival bars constructed in the archways along the side of the main

The fuller flavour.



WWW.FULLERS.CO.UK
WWW.DRINKAWARE.CO.UK

WHATEVER YOU DO, TAKE PRIDE.

hall and plenty of seating. The beer list runs to about 140 different ales and there is live music each evening plus on Saturday afternoon the usual treat of Martin Atterbury playing English classics on the Wurdlitzer Organ - not many beer festivals can boast that! CAMRA members enjoy discounted admission to this festival. The venue is just a few minutes walk from Burton on Trent railway station, direct trains run from Sheffield every other hour operated by Cross Country. Festival information at www.burtoncamra.org.uk, train information at www.crosscountrytrains.co.uk

Leeds beer festival also takes place from the **15th to 17th March** at Pudsey Civic Hall. This is a popular festival so get there early (and also be aware the festival has two sessions with a break rather than all day opening). There will be a choice of about 175 beers on the list and the theme this year is 'inventions'. CAMRA members get free admission to this festival except on Friday when a discount is available. The venue is a few minutes walk from New Pudsey station, from Sheffield you will need to change trains at Leeds to get there. Festival information at www.leeds-camra.com, train information at www.northernrail.org.uk

From the **22nd to 24th March** is the **Manchester Museum of Science & Industry beer festival**, with 56 real ales served in the museum's Power Hall surrounded by old railway rolling stock! CAMRA members enjoy discounted admission to this festival. Deansgate railway station is 5 minutes walk from the venue, trains run from Sheffield to Manchester Piccadilly station up to three times an hour with local connections to Deansgate. Various train operators run on this route, for information visit www.nationalrail.co.uk. For festival information www.thcamra.org.uk

CAMRA festivals in April include **Doncaster, New Mills, Hull and Skipton**, more on these next month. Also don't forget the Kelham Island Tavern and New Barrack Tavern have pub beer festivals on during March.

Looking further ahead, some news on the Three Valleys Festival, which takes place on Saturday 2nd June. This sees a number of venues working together to put on a big event. Not all venues are confirmed yet but here what is known so far.

The Coach & Horses in Dronfield, which is operated by Thornbridge Brewery, will have an outside bar featuring beers from 6 guest breweries that are respected in the 'craft beer movement'. The Coach will also have a programme of live music with a stage in the beer garden.

The Dronfield Arms will also have an outside bar with 6 guest ales in addition to those on the pub's main bar, there will be a couple of bands performing and food will be available.

The Three Tuns will see all 12 handpumps on the bar given over to showcasing Spire Brewery with guest beers available from the cellar. The Tuns will also feature live music, a hog roast and pizzas.

The Miners Arms will be changing their beer range for the day and serving food all day.

The Hearty Oak will have an increased beer range plus real ciders, hot roast meat sandwiches will be available from a carvery counter and there will be live music in the evening.

In the village of Holmesfield now, **the Horns** will be setting up a festival bar with 10 beers as well as the three on the main pub bar, many of these beers will be from RAW brewery. The Horns will also have live music. **The George & Dragon** will be featuring a range of beers from Peak Ales plus a guest. **The Rutland Arms** is also expected to be part of the festival.

Down in Barlow, **Barlow Brewery's** bar will be open with a selection of their beers to try and there will be live music and food out in the farmyard.

Over the county boundary and the **Castle Inn in Bradway** will be hosting a cider festival and gourmet barbeque, finally the **Cricket Inn at Totley** will be running a small beer festival with food available.

A free bus service will link all the above venues, the bus will also call at Dronfield railway station and near Dore & Totley rail station. Buses will start from the Coach & Horses with Dronfield station the next stop, they will run half hourly as far as the Miners Arms then alternate buses will run via Bradway & Totley or the Rutland Arms to Holmesfield and Barlow. The service will run from midday until 11pm.

We are awaiting information on whether the Jolly Farmer in Dronfield Woodhouse or the Angel in Holmesfield is participating at the time of going to press.

Information will be available at www.threevalleysfestival.org.uk and also on the festival Facebook page.



Tramlines Music Festival

The organisers of Sheffield's popular Tramlines music festival have announced the dates for this year - 20th to 22nd July. Tramlines sees a huge number of free gigs in a wide range of venues across central Sheffield over a weekend. The majority of the venues are pubs and bars with a few main stage venues and a busker bus running between them.



Last year Sheffield Brewery produced an exclusive Tramlines Ale which was available at many of the venues including the main stage on Devonshire Green and the World Music Stage at the Peace Gardens, sales of this beer helped fund the Blues stage element of the festival, which was held at the CADS complex near Shalesmoor.

Bob Swift, of Hummingbirds Blues Band fame, is the organiser of the Blues & Ale trail for Tramlines Festival and he has launched a competition amongst breweries in Sheffield to see who will get to supply the Tramlines Ale this year. All the breweries based in the City have been invited to submit a potential beer, ideally a pale session beer with broad appeal, to a tasting competition with a judging panel including artist Pete Mckee, Tramlines director Sarah Nulty and local CAMRA Chairman Andrew Cullen. This will choose which brewery's beer is the official Tramlines Ale for 2012 and £5 from the sale of each cask will go towards funding all the Blues music featured at Tramlines Festival. Remember admission is FREE to ALL Tramlines gigs.

In addition to the Blues main stage at Tramlines Festival, a number of pubs in the area will be hosting blues music over the festival weekend. A free bus will run between the venues most of the day, also look out for special promotional fares on Supertram. For the latest news on Tramlines festival visit www.tramlines.org.uk

OLD
Nº7

MARKET HILL
BARNLEY
S70 2PX

OFFERING AN EXCITING RANGE OF CASK ALES,
CONTINENTAL BEERS, PILSNERS AND CIDERS.



OldNo7Barnsley



@OldNo7Barnsley

WWW.ACORN-BREWERY.CO.UK

Kelham Island Specials Feb & March

Kelham Island Brewery, Sheffield, S3 8SA. tel 0114 2494804
sales@kelhambrewery.co.uk—www.kelhambrewery.co.uk

Returning
Classic



Bête Noire (ABV 5.5%) First brewed in 1992 as a Winter special. Bête Noire is a **Black Beer** brewed from Maris Otter malted barley with additions of crystal malt and chocolate malt to give flavouring and colour. Bête Noire has a rich, warming full bodied flavour with hints of fruit and chocolate.

Brand
New Beer



Bohemian Rhapsody (ABV 4.7%) Golden Continental Style Beer brewed with the finest aromatic Munich and Vienna malts and a trio of Styrian Goldings. This beer is fermented with a German lager yeast to give a refreshing beer with fruity estery notes which combine with the crisp floral hop character for a flavoursome pint.

Brand
New Beer



Big Black Blue Sound (ABV 5.3%)
A classic American IPA with a twist. A quartet of pungent hop varieties give a wave of fruit and floral aromas which complement a malt grist taken to the darkside with black malts creating
A Stunning Black IPA

Returning
Classic



45rpm (ABV 4.5%) The Classic is back: 45rpm, a rock and roller of a **Pale Ale** brewed with a special blend of hops to give a massive fruity citrus aroma which sets the mouth watering. The succulent pale malts support the zingy hops as they leave a festival of invigorating zesty flavour.



Five Regular Ales. tel 0114 2494804

5.2%



4.5%



4.3%



4.0%



3.8%

THE WHITE

ESTABLISHED 1781



NOW FULLY REFURBISHED
14 CASK ALES
FREE MEETING
ROOM HIRE



0114 2551500

615 LONDON RD S2 4HT

WWW.WHITELIONSHEFFIELD.CO.UK



FOLLOW US - [FACEBOOK.COM/THEWHITELIONSHEFFIELD](https://www.facebook.com/thewhitelionsheffield)



Soap to Fireman, Sea to War

Part one: The Isle of Man

In our two week holiday last year commencing Saturday 8th October we went to the Isle of Man, Isle of Wight and Jersey using various railways, National Express and the ferries from Liverpool (Isle of Man) and Portsmouth (Jersey).

I will start with the Isle of Man where our hotel was The Hydro on the Promenade. The weather was inclement to say the least on arrival and had followed us all the way from Liverpool. On checking the bar, it had only the local Okell ales, including Okells Bitter that I had on the ferry coming over ! On the ferry over the barman just said 'it's the local bitter' on the Isle of Man and on arrival the Hydro Bar was empty.

Our first day and we took the Manx Electric Railway to Ramsey via Laxey. Ramsey is the capital of the North and upon our sightseeing we came across the Historic Tavern on the quay just opposite the boat yard that produced The Star of India. It was the Trafalgar with its harbour side location on the West Quay. My first real ale pub had arrived, a Busy, traditional looking pub on the front well worth finding with Okells Bitter, Bushy's Oyster Stout, Moorhouse's Black Cat Mild and Olde Trip on offer.

The pub seemed to be preparing itself for Halloween with pumpkins and witches aplenty and as I looked around I started to notice the Cains Memorabilia and wondered why this far from Liverpool ? Cains Brewery was established in the 1870's by Robert Cain who was born in County Cork in 1826 and came to Liverpool as an 18 year old. At the age of 24, he entered the Liverpool brewing industry, buying a small pub in Limekiln Lane and brewing his own ales. Cains fortunes rose with those of his adopted city, and those of Britain itself, on the great Victorian era of Industrial expansion, economic progress and Empire. By 1858 Robert was able to buy an old established brewery site on Stanhope Street — the site where Robert Cains beers are still brewed today, and his name rapidly became famous throughout the City, for the exceptional quality of his beers. The rest they say is history and he eventually died in 1907 aged 81. My mind wandered to and fro then the connection with Okells answered the question as I sat in my real ale haven in the Trafalgar. The Steam Packet Company used to operate from Llandudno, Belfast, Fleetwood, Douglas, Liverpool, Ardrossan and Dublin for 150 years of Service to the Isle of Man 1830 — 1980.

Okell and Son Ltd even produced a special ale to celebrate this, aptly called the Steam Packet Company Ale brewed on the Isle of Man so it is no wonder the Cains influence spread across the water ! However the regional brewery founded in 1850 by Dr William Okell in Douglas, Isle of Man is the Okells Brewery. He was a Cheshire surgeon who started the Okells Brewery in Castle Hill, Douglas. By 1874 he owned many of the pubs on the island, had convinced the Islands' Parliament (Tynwald) to create an Act ensuring the purity of the beer brewed on the Isle of Man and built the Falcon Steam Brewery just outside Douglas. Crafty chap this. In 1972 Okells was bought by Heron and Brearley, a local drinks Company. In 1986 it was merged with Castletown Brewery and renamed the Isle of Man Breweries. Finally in August 1994, the Company moved to a new purpose built brewery outside Douglas and reverted back to the name Heron and Brearley.

To extend the connection further, Okells have four UK pubs, two of which are in Liverpool, Thomas Rigby's and The Fly in the Loaf, as the connections all became obvious as a sampled the guest ales on the Trafalgar alongside the Okells brews which are extensive. There is the Bitter (at 3.7 abv) of course but at least another eleven more plus maybe the barman on the ferry was trying to keep them a secret!



Briefly they are as follows, with my favourites being the Castletown Ale which is a light straw coloured bitter at 4% with its distinct Citrus hop aroma and the Summer Steam which is a wheat beer. Others are St. Nick, Olde Skipper, Spring Ram, Autumn Dawn (a strong full bodied light brown beer, fairly lightly hopped), smoked Celtic Porter (Traditional 4.8% ABV Porter which is rich and dark with Smokey aromas of liquorice and toffee brewed with a blend of pale, crystal Black and Chocolate Malts), Doctor Okells (light India Pale Ale IPA with a fine dry finish to counteract the initial sweetness), Machr (light Wheat Beer at 4.4% resony hops and lemon fruit on the aroma, a refreshing wheat beer with banana and lemon in the mouth and a bitter hop finish), Smooth (full malt hop aroma) and Dark Mild at 3.4 abv which is a dark reddish brown genuine mild with a fine rich malt aroma with just a hint of Seville oranges. All of course lead to well thought out artwork on the pump clips with the three most common having a generic type clip just coloured different, i.e. Bitter (red), Dark Mild (blue) and Smooth (brown). Of course some of these are seasonal beers like the Spring Ram, St. Nick, Autumn Dawn, and one I haven't mentioned which is the Summer Storm. Others are occasional like Casthetown Bitter, Saison and some more not mentioned Elixir and Eastern Spice. The Trafalgar had Bushey's as well but more of that later. So if you are in Ramsey and you want real ale, a fantastic cosy olde worlde pub a shrine to good quality real ales; then you MUST visit the Trafalgar. In fact we regrettably left to get the tram back we came across a chap outside who mentioned the next Real Ale haven. The Rovers Return in Douglas! Yes, things had taken an upturn and everything was becoming connected, and now we know where we were heading that night!

It's amazing though with a little investigation how things become connected in the Real Ale World don't you think! After we returned to Douglas on the Electric Railway we had a meal in a local restaurant and ventured forth to find the next real ale gem on the Island, The Rovers Return, 11 Church Street, Douglas. It was a pub with plenty of character and is a must for any real ale drinker. We sat by the welcoming open fire and started to notice our surroundings. Above the fire was a green metal fire station sign and in the room directly opposite there were plenty of old photos relating to the local fire station amidst the orange wallpaper. Upon investigation in the room there was also a Two Pence 1915 Public Warning poster relating to the aerial identification of German and British airships/aircraft ! It was interesting in itself as Germany had three airships (Zeppelin, Parseval and Schutte-lane), whilst we had four, and likewise Germany had eight aircraft types identified whilst we had nine. Next to the room on the wall was another sign/notice stating 'HALFTIME TURNSTYLES'.



Another offshoot room was on the left with two large shop windows facing outwards as though it was a shop frontage? Luckily we met a local regular who had researched the pub, Darren Prior and with the help of a very superb landlord, Guy Armstrong Rossiter who was a passionate real ale landlord. It was all pieced together and I would like to take the opportunity to thank them both for their help on this public house. The landlord's uncle was Leonard Rossiter (Rising Damp) who had been at the pub for four years, and had accumulated twenty years' experience in the licensed trade. In 1973 on the Isle of Man it was the pub with the most doors and has had four landlords in the last ten years. It's history dated back to the Nineteenth Century and was called the Cross Keys. Possibly licensed in 1813. In fact the current argument in Douglas is which is the oldest pub between The Rovers Return of The Saddle by the marina.

In 1900 The Cross Keys was renamed 'the Albion' and this lasted until 1997 when it was renamed yet again to the current Rovers Return. The Albion used to be painted white outside and some of this can still be seen today. However it acquired two nicknames between the Cross Keys and the Albion namely the Fireworkers Arms and the Soapary. Both the Soap Factory/Candle Works and the Fire Station, because the workers involved used to drink here, before, in-between/after their shifts. In fact outside the front door to the Rovers the old entrance to the Fire Station dating 1898 is just round the corner.

Continued overleaf...

Continued from previous page.

Hence the Fire Station sign came from the Governor's Office in the Fire Station whilst the Fire Hoses ('Merryweather' factory stamped and tested!) on the three hand pumps came from The Merryweather Fire Engines detained there. Even the last orders are rung from the Stations Fire bell.

However now to the beers, and some history relating to Busheys. There were three other Guest Ales on offer this night. Blonde, Aragon (Banks and Taylor @4.7%) and lemon blossom from the Hornbeam Brewery in Manchester which is the one out of the three I preferred. Three guest ales are rotated as is one of the Bushey's and this night on offer was Bramble Ale of Man. Cider drinkers are accommodated by Old Rosie. The other two ales were the mainstays, Ruby (1874) Mild (3.4%) and Manx Bitter, and having sampled them all I certainly had a good night; as we sat by the fire and read



the latest edition of MerseyAle which is just one of Liverpool's Real Ale magazines. Busheys Brewery is a local brewery in Douglas in the Isle of Man which was founded by brother and sister Martin and Nicky Brunnschwieler in 1986. In October 1984, they took over Zhivago's Bar in Victoria Street, Douglas, and two years later, started a microbrewery in the cellar and made their own brand Old Bushey Tail (4.7%) which is a red-brown beer with a strong malt flavour with an aftertaste of hops and caramel. The location was aptly named Bushey's Brewpub. A professional brewer Davey Jones from London was placed in charge and everything went from strength to strength. Currently however the head brewer is Neil 'Curly' Convery.

The brewery is connected to the annual motorcycle race on the Man U, with the 'Ale of Man' and the Bushey's beer tent on Douglas promenade, hence their pump logo merchandise. Beers include Old Bushy Tail (4.7%), Weiss Beer (4.5%) and Piston Brew (4.%) whilst seasonal/occasional beers

Chris, Mandy & the team look forward to welcoming you to...



The Plough Inn

Low Bradfield

Open 12-11 every day!

- Real Ales from the local Bradfield Brewery including Farmers Blonde, Belgian Blue and our house beer Farmers Plough, together with 2 rotating guest beers and two real cides.
- **Wholesome home cooked food available at reasonable prices served lunchtimes Mon to Sat 12-2:30, evenings Wed to Sat 5:30-8:30 and all day Sunday until 7pm.**
- Quiz night Wednesday – Free entry, free buffet, gallon of beer to winner.
- **Music evening – all types – 1st Tuesday of the month. Listen or join in.**
- Cask Marque accredited for quality of cask ale.

A genuine freehouse and friendly country pub at Low Bradfield.

Tel: 0114 285 1280. Get here on bus routes 61/62. Large Car Park available.

include Oyster Stout (4.2%), lovely Jubbly Winter Ale (5.2%), Mannann's Cloak (4.0%), Buggane, Fairy Bridge and of course Manx Pride. As we left the Rovers Return and walked back through the pedestrian precinct back to the Hotel late that night the heavens opened but it mattered not, we had found another real ale haven and had one hell of a brilliant night.

Next day, with a somewhat heavy head we went on the Isle of Man Steam Railway south to Port Erin and what should we see but the brown and green Bushey car (pictured on previous page) outside one of the local pubs which was celebrating 25 Years of Bushey's Ale. It was closed unfortunately but on the side of the car was a superb 'clip', Busheys Gibraltar a craft brewed 'Barbary Beer containing Gibraltar grown hops' whilst on the other side and equally striking was Bushey, a fox on his motorbike celebrating Premium Manx Ale ! Inside were plenty of goodies but what a find.

Port Erin was interesting and we returned on the train back to Douglas, as we walked by the Marina we came across The Saddle on our way to the ferry home but time had beaten us but we will return as Isle of Man has plenty to offer anybody. On the ferry back, it was a pint of Manx Bitter, but I didn't tell the barman the islands real ale secrets, except to say he didn't know what he was missing!

Paul Sheldon



To get to the Isle of Man from Sheffield, East Midlands Trains run a regular service to Liverpool Lime Street from where it is a short taxi ride to Liverpool Landing Stage where the fast ferry operates to Douglas. Inclusive train and ferry tickets are available from £65 return. Once in Douglas, the tourist information office in the ferry port will sell you an Isle of Man rover ticket valid on all buses, trains and trams on the island. Isle of Man CAMRA's first ever beer festival takes place 12th to 14th April 2012.



Nags Head Inn

All Bradfield Brewery Ales £1.95 a pint!



Pie and a pint Fridays!
£5.75 Served 12:00 - 2:30

Food served:

Tuesday - Friday 12:00 - 2:30, 5:30 - 8:30.
Saturday 12:00 - 3:00. Sunday 12:00 - 3:00.

Quiz night Thursday

Free entry, a gallon of beer to the winner, free buffet!

**Nags Head Inn, Stacey Bank, Loxley,
Sheffield. S6 6SJ. Tel: 0114 2851202**

THE BATH HOTEL

Drinking Times www.thebathpub.co.uk

12 - 11pm Monday - Saturday

7pm - 10.30pm Sunday



**Live Jazz - Folk - Blues
Every Sunday**

Alternative
REAL ALES
Continental
lagers

Call in an check out who's on!

Irish music session every Monday

Blues drop-in session first Wednesday of the month

Gypsy Jazz on the second Wednesday of the month

FREE HOUSE

66-68 Victoria Street

Sheffield S3 7QL

Tel: 0114 249 5151

e-mail: info@thebathpub.co.uk



First ever Welsh pub wins CAMRA's National Pub of the Year!



A small community pub in north Wales transformed by a local family has today been announced as the best pub in Britain by CAMRA, the Campaign for Real Ale.

The Bridge End Inn, Ruabon, not only enters CAMRA's history books as the first ever Welsh pub to win its National Pub of the Year competition, but having only been re-opened by its current owners in March 2009, becomes one of the most remarkable success stories in the competition's history.

CAMRA's National Pub of the Year competition recognises all the criteria that make a great pub, including atmosphere, decor, welcome,

service, value for money, customer mix, but most importantly, the quality of the beer.

The Bridge End Inn was taken over and subsequently revitalised by the McGivern family in 2009, with the pub earmarked as the ideal premises for the family microbrewery – McGivern Ales - overseen by son Matthew. Having reopened the pub 5 weeks after taking it on, the McGivern family were praised by CAMRA members for restoring the pub's interior, and for introducing an extensive real ale and cider range.

Now serving 7 real ales and a selection of local ciders at any one time, the pub has stocked real ales from over 100 breweries since opening, with a particular emphasis on local produce. As well as acting as the brewery tap for McGivern Ales, other breweries from north Wales, Cheshire and Shropshire feature prominently at the bar.

Peter McGivern, Bridge End Inn licensee, said: 'We are a family business, and the pub has been a real labour of love. What we strived to do was create a pub not focused on food that we would enjoy visiting, putting the product first and offering a wide range of traditional beer styles. As a result we've built up a mixed trade of locals and beer lovers from all over Britain.

'We are delighted with this national award, particularly as we were told when first taking on the pub that there was little demand for real ale in the area. Through a lot of passion and hard work for what we do, we've enjoyed great success in a short space of time, which couldn't have been achieved without the support of family, close friends, staff and customers.'

Hailing the success of the pub, Julian Hough, CAMRA Pubs Director, said: 'The pub is an unbelievable success story, and is a perfect case study of a local outlet playing a pivotal role at the heart of a small community. By investing time into providing a quality beer range full of choice, the pub in a short space of time has become revered across Britain by many beer lovers. I offer my personal congratulations to the Bridge End Inn for such rapid progression in taking CAMRA's national pub title.'

The Bridge End Inn beat 3 other finalists this year to claim the crown. These pubs are:

**Engineers Arms, 68 High Street, Henlow,
Bedfordshire, SG16 6AA**

Front, Custom House Quay, Falmouth, Cornwall, TR11 3JT

**Swan with Two Necks, Main Street,
Pendleton, Lancashire, BB7 1PT**

***If you wish to advertise
in a future issue of
Beer Matters,
the FREE magazine of
the Sheffield & District
Branch of CAMRA...***

***Please contact Alan Gibbons
on 0114 2664403, 07760
308766***

***or email him at
treasurer@sheffieldcamra.org.uk***

***Colour: Full page £75,
half page £50,
quarter page £30.***

***Greyscale: Full page £60,
half page £40,
quarter page £25.***

Shakespeares



*For beer and
music lovers!*

*Traditional 19th Century freehouse featuring 9 hand
pumps, at least three real ciders, over 80 single malt
whiskies and a fine selection of rums, gins and vodkas.*

*With a large beer garden, function room and 60p
sandwiches, make Shakespeares your new local!*

Acoustic Session on Wednesday evening
Quiz Night Thursday evening
Live Music at Weekends

Shakespeares, 146-148 Gibraltar Street, West Bar, Sheffield
www.shakespeares-sheffield.co.uk
info@shakespeares-sheffield.co.uk
0114 275 5959



National CAMRA news

Greg Mulholland MP has challenged Business Minister Ed Davey MP over the appointment of a surveyor employed on various cases by Punch Taverns as Chairman of a new pubs dispute panel. This new pubs dispute panel (PICAS) was formed as part of the self-regulation deal between the Government and the pub companies last year and is an integral part of Ed Davey's plan to curb the excesses of the large pub companies.

Greg Mulholland MP said in Parliament: "The one seemingly hopeful part of the Government's otherwise dreadful response on pub companies was the unfortunately named PICAS—the pub independent conciliation and arbitration service. However, hope soon faded when it was revealed that it was to be pubco-funded, and this week it has been announced that it will be chaired by a Punch Taverns surveyor. Does the Minister think that licensees will want to use that supposedly independent body?"

Jonathan Mail, CAMRA's Head of Policy and Public Affairs said: "A properly constituted and independent arbitration service would represent a big step forward in eliminating unfair business practices relating to the treatment of tied lessees by large pub companies. The success of this new pubs dispute panel however depends on its ability to guarantee impartiality and the best way of doing this would be to seek qualified arbitration experts without links to either large pub companies or individual lessees."



Community Pubs Month

In April, CAMRA, the Campaign for Real Ale is to launch a new national pubs campaign, Community Pubs Month, to champion local pubs which are at the heart of countless communities across Britain.

The aims of Community Pubs Month are to increase footfall in pubs, to encourage more publicans to promote new or existing events to attract further trade, and to spread awareness of community pubs throughout the media.



The dedicated website for the Month – www.communitypubsmmonth.org.uk – is geared up to give pubs free publicity through listing any events licensees have planned throughout the month of April. Pubs signing up to the Month will be given free promotional material to help promote their events, whether it be the regular weekly pub quiz or a big one-off charity bash to get the community together.

Kicking off proceedings on Monday April 2nd with Community Pubs Day – the day after CAMRA's Members' Weekend & AGM in Torquay – CAMRA branches across Britain will be organising a wide range of events to promote their local pubs during the Month, and will be working in the lead-up to April to ensure this first year for the campaign is a big success.

Tony Jerome, CAMRA Head of Marketing, said: 'The real aim of this Month is to give a window of opportunity for hard working publicans to promote any events they have planned in April, and for us at CAMRA to give them all the help and support in terms of publicity and increased trade.

'We realise it's a tough time out there for pubs at the moment – as CAMRA's new pub closure figures highlighted last week – and this is why CAMRA has put a large amount of campaigning funds into this initiative to help pubs market themselves during April.'

As well as CAMRA branches ordering promotional material to maximise the exposure for this new campaign in pubs across Britain, pub licensees can also order packs direct from CAMRA. Available now, Community Pubs Month packs will include campaigning posters, beer mats, leaflets and pump clip crownners. Pubs interested in acquiring material for Community Pubs Month can find out more by visiting www.communitypubsmmonth.org.uk



Outstanding contribution award

Normally in this space is an article about the winner of our Pub of the Month award, however this month it is a recipient of our 'Outstanding contribution to the appreciation of Real Ale' as the venue in question isn't strictly speaking a pub as it isn't normally open to the public.

The award is to recognise the Interval Café Bar in the University of Sheffield's Student Union for their efforts to bring good beer to the University. On the bar, in addition to a small number of regular beers from local brewers, they have a Monday beer festival where a number of the pumps are given over to a specific brewery, showcasing a cross section of their beers.

The Interval is the smarter of the Union bars with comfy seating and a menu of various snacks and meals and is quite a pleasant way of relaxing with a decent pint and a bite to eat.

The management of the Interval is also involved with organising the annual Student Union Beer & Cider festival which takes place over the May bank holiday weekend with around 50 real ales on a gravity stillage in the Raynor Lounge and a tent full of cider in the Union Gardens.

We'll be presenting the award at the Interval on Tuesday 13th March at 8pm and CAMRA members are invited to come in and enjoy what the bar has to offer - a rare chance for non-students to see what all the fuss is about!



BRADFIELD BREWERY

FARMERS ALES



THIS MONTHS SEASONAL

FARMERS IRISH DEXTER 4.8%

A DEEP RED COPPER COLOURED ALE
AVAILABLE FROM 1st MARCH

TEL: 0114 285 1118

WWW.BRADFIELDBREWERY.COM



Open from 12pm Daily



Sheffield's Newest Real Ale and Live Music Venue

Free admission

11 Hand-Pulls, Continental Lagers
and an Extensive Wine List

Available
12-7pm
daily

the Thole

Pie Fiver Deal

Choose an Award Winning Pie

Add a dollop of creamy mash, boozy beer infused peas or baked
beans & lashings of tasty gravy, plus a pint of Ossett Brewery
Session Beer (Pale Gold / Yorkshire Blonde), tea or coffee

All for only a Fiver

PUB QUIZ

Every Tuesday *Night*

Win a Gallon of Ossett Ale

Free Entry - Complimentary Supper

from
9pm

VIRTUALLY ACOUSTIC

from
8.00pm

EVERY WEDNESDAY

FEATURING THE BEST UP & COMING
TALENT FROM ACROSS YORKSHIRE

FROM
9PM

LIVE COVER BANDS

EVERY FRIDAY & SATURDAY

ROCK/INDIE/SOUL/FUNK/SKA/BLUES



*The Hop, Unit 14, West One Plaza, Fitzwilliam Street,
Sheffield, S1 4JB Tel: 01142 781000 www.thehopsheffield.co.uk*



THE HALLMARK OF A PERFECT PINT



Look our in March for another single hopped IPA this one using another Australian hop, **SUMMER**, with subtle mango notes. At the beginning of March 29/2 - 3/3 why not visit our brewery bar at the Magna festival. Thanks for supporting our **TRAMLINES** festival ale during 2011.



Brewery Tours

Book the brewery for a tour or your own private party. Enjoy a range of our beers, an informed tour of the brewery, and a pie & pea supper or summer BBQ in our new garden area.

Core Beer Range

Five Rivers 3.8%
Crucible Best 3.8%
Tramlines 4.0% discontinued
Blanco Blonde 4.2%
Seven Hills 4.2%
Sheffield Porter 4.4%
Sheffield IPA 5.0%

Sheffield Brewery, Unit 111,
J C Albyn Complex,
Burton Road,
Sheffield,
S3 8BT

www.sheffieldbrewery.com
email: sales@sheffieldbrewery.com
Tel: (0114) 2727256 (Tim, Brewery)
or (0114) 2724978 (Eddy, Gardeners Rest)



Sheffield CAMRA contacts & Beer Matters information

YOUR Committee Contacts

Branch Chairman:

Andrew Cullen

(Contact details listed opposite)

Press & Publicity Officer:

Dave Williams

07851 998 745

pressoffice@sheffieldcamra.org.uk

Membership Secretary:

Mike Humphrey

membership@sheffieldcamra.org.uk

**For more contact info,
please visit our website at
www.sheffieldcamra.org.uk**

Sheffield & District CAMRA is a
branch of the Campaign for Real Ale,
230 Hatfield Road, St. Albans,
Hertfordshire. AL1 4LW.

Tel: 01727 867201

Fax: 01727 867670

Email: camra@camra.org.uk

Website: www.camra.org.uk

TRADING STANDARDS

Short measures, misleading advertising
and other consumer complaints?

Sheffield Trading Standards

2-10 Carbrookhall Road, Sheffield.

S9 2DB. Tel. 0114 273 6286

www.tradingstandards.gov.uk/sheffield

Beer Matters advertising - contributions, etc.

Editor: Andrew Cullen

07554 005 225

beermatters@sheffieldcamra.org.uk

Advertising: Alan Gibbons

0114 2664403

or 07760 308766

treasurer@sheffieldcamra.org.uk

Design & Production:

Alun Waterhouse

Advertising rates:

Colour: Full page £75, half page £50,
quarter page £30.

Greyscale: Full page £60, half page
£40, quarter page £25.

Discounts for regular placements.

Articles, letters and suggestions for Beer
Matters are most welcome, please email
them to the address above.

Please note that for legal reasons a
full name and postal address **must**
be provided with all contributions.

COPY DEADLINE FOR NEXT ISSUE:

Tuesday 13th March 2012

Please note: The opinions expressed in
this publication are those of the author
and may not necessarily represent
those of the Campaign for Real Ale,
the local branch or the Editor.

Beer Matters is ©CAMRA Ltd.

PUBLIC TRANSPORT INFO.

Trains - www.nationalrail.co.uk - 08457 48 49 50

Buses in South Yorkshire - www.travelsouthyorkshire.com - 01709 515151

Buses in Derbyshire - www.derbyshire.gov.uk/buses



Dates for your diary...

Saturday 3rd March 12:00 - Regional Meetings

We join other branches in Yorkshire and the East Midlands to catch up on CAMRA business regionally and nationally, followed by a few social drinks. The Yorkshire meeting is in Driffield, the East Midlands meeting is at the Canal House in Nottingham. See What's Brewing for more information.

Tuesday 6th March 20:00 - Branch meeting

We meet and discuss pub, club and brewery news, catch up on any campaigning issues, vote for pub of the month and any other local branch business, all over a pint or two. This month the venue is the Gardeners Rest. Get there on bus 53.

Tuesday 13th March 20:00 - Special Award presentation

The Interval Cafe Bar in the University of Sheffield Student Union offers a range of real ales and makes an effort with the selection - normally a combination of popular local beers and the brewery of the week. The Interval management is also involved with the excellent annual Beer Festival held in the Student Union. As the Union is only normally open to students, it doesn't qualify for our pub or club awards so we have decided to present our 'Outstanding Contribution to the promotion of real ale' award. Come along, see what you are missing, have a pint or two and see us present the certificate!

Thursday 15th March 19:30 - Dronfield & Villages Sub-Branch meeting

We are looking at setting up a separate sub-branch for members living in Dronfield and the surrounding villages. This will have its own branch meetings and social programme and will also be responsible for distributing Beer Matters magazines in the area. This meeting, chaired by the Regional Director, is to gauge interest and if there is enough enthusiasm get things up and running. The meeting is at the Green Dragon on Church Street, Dronfield (nearest bus stops - route 43 at Sainsburys, route 89 at Civic Centre or route 44/44A at rail station)

Saturday 17th March 10:30 - RambAle

Our monthly walk with refreshment stops in country pubs along the way. This time we are catching the 10:44 train from Sheffield to Kiveton Park for a gentle stroll along the Chesterfield Canal towpath and the southern half of the Five Church Walk to the village of Harthill, with beers en route at the Parish Oven in Thorpe Salvin and the Beehive in Harthill, from where we return to Sheffield by bus. A South Yorkshire Daytripper ticket at £6 will cover the train and bus travel involved.

Tuesday 20th March 20:30 - Beer Festival Planning meeting

We continue work planning the 2012 Steel City Beer & Cider Festival, likely to take place in October. The meeting venue is the New Barrack Tavern on Penistone Road. Get there on buses 53/79.

Tuesday 27th March 20:00 - Beer Matters Distribution & Committee Meeting

The April issue of Beer Matters will be out and stored at the Rutland Arms on Brown Street, if you are one of the volunteers that has signed up to a distribution run why not collect your copies tonight and have a social pint with other distributors? The Committee meeting follows at 9pm.

Tuesday 3rd April 20:00 - Branch AGM and branch meeting

This is the branch's official AGM where we fulfil legal requirements with the accounts etc, elect the committee for this year, discuss any motions for debate (deadline to submit motions is the March branch meeting) and review what we've been doing over the past year. The usual branch meeting follows where we share pub, club and brewery news, vote for pub of the month and catch up with news from the committee. The venue is the Red Deer on Pitt Street, Sheffield City Centre. Nearest bus and tram stops are on West Street.

**For more information and to book places on trips,
please contact our Social Secretary [Richard Ryan](#) on 07432 293 513**

A Campaign of Two Halves

Fair deal
on beer
tax

Save
Britain's
pubs!



Join CAMRA Today

Complete the Direct Debit form and you will receive 15 months membership for the price of 12 and a fantastic discount on your membership subscription.

Alternatively you can send a cheque payable to CAMRA Ltd with your completed form, visit www.camra.org.uk/joinus or call 01727 867201. All forms should be addressed to Membership Department, CAMRA, 230 Hatfield Road, St Albans, AL1 4LW.

Your Details

Title _____ Surname _____

Forename(s) _____

Date of Birth (dd/mm/yyyy) _____

Address _____

Postcode _____

Email address _____

Tel No(s) _____

Direct Debit Non DD

Single Membership £20 ☐ £22 ☐
(UK & EU)

Joint Membership £25 ☐ £27 ☐
(Partner at the same address)

For Young Member and concessionary rates please visit www.camra.org.uk or call 01727 867201.

I wish to join the Campaign for Real Ale, and agree to abide by the Memorandum and Articles of Association

I enclose a cheque for _____

Signed _____ Date _____

Applications will be processed within 21 days

Partner's Details (if Joint Membership)

Title _____ Surname _____

Forename(s) _____

Date of Birth (dd/mm/yyyy) _____

12/10

**Campaigning for Pub Goers
& Beer Drinkers**

**Enjoying Real Ale
& Pubs**

Join CAMRA today – www.camra.org.uk/joinus



Instruction to your Bank or Building Society to pay by Direct Debit

Please fill in the whole form using a ball point pen and send to:
Campaign for Real Ale Ltd, 230 Hatfield Road, St Albans, Herts AL1 4LW

Name and full postal address of your Bank or Building Society Service User Number

To the Manager Bank or Building Society

Address

Postcode

Name(s) of Account Holder

Branch Sort Code

Bank or Building Society Account Number

Reference

9 2 6 1 2 9

FOR CAMRA OFFICIAL USE ONLY

This is not part of the instruction to your Bank or Building Society

Membership Number

Name

Postcode

Instructions to your Bank or Building Society

Please pay Campaign for Real Ale Limited Direct Debits from the account detailed on this instruction subject to the safeguards issued by the Direct Debit Guarantee. I understand that this instruction may remain with Campaign for Real Ale Limited and it will be passed electronically to my Bank/Building Society.

Signature(s)

Date



This Guarantee should be detached and retained by the payer.

The Direct Debit Guarantee

- This Guarantee is offered by all banks and building societies that accept instructions to pay by Direct Debit.
- If there are any changes to the amount, date or frequency of your Direct Debit The Campaign for Real Ale Ltd will notify you 10 working days in advance of your account being debited or as otherwise agreed. If you request The Campaign for Real Ale Ltd to collect a payment, confirmation of the amount and date will be given to you at the time of the request.
- If an error is made in the payment of your Direct Debit by The Campaign for Real Ale Ltd or your bank or building society you are entitled to a full and immediate refund of the amount paid from your bank or building society.
- If you receive a refund you are not entitled to, you must pay it back when The Campaign for Real Ale Ltd asks you to.
- You can cancel a Direct Debit at any time by simply contacting your bank or building society. Written confirmation may be required. Please also notify us.

Banks and Building Societies may not accept Direct Debit instructions for some types of accounts.



thornbridgebrewery.co.uk info@thornbridgebrewery.co.uk T. 01629 641000



Thornbridge
BREWERY
INNOVATION
PASSION
KNOWLEDGE